

## Tunnel TM5310

---

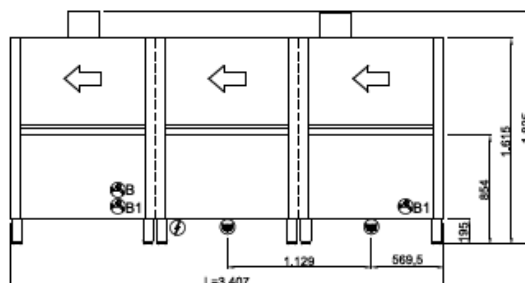
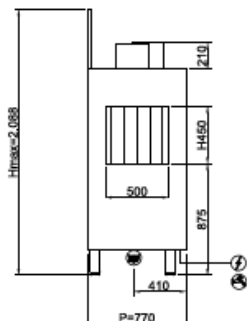
TYPE	Rack conveyor dishwashers
LINE	TUNNEL LINE
BASKET	500x500
SIZE	3948x770x1825h mm

---



The **TM5310** Rack Conveyor dishwasher is ideal for those who want to wash with maximum efficiency and speed, minimising running costs and water quantities per basket, with lower consumption of electricity and detergent. The TM5310 is a **full optional model** with a **drying tunnel** and **heat recovery unit**, and offers the operator the possibility of using different specific washing cycles via the practical **digital control panel**, which displays and records self-diagnosis messages. The double delivery wash pump ensures great pressure even against the most stubborn dirt while the pre-wash takes care of the larger residues, collecting them in an easily emptyable filter drawer. The drying area is optimised for dishes as well as for concave objects and glasses thanks to the air jet that covers the entire space from top to bottom. The **useful opening of 450 mm** allows the introduction of a wide range of plates, trays, pans, pots and various utensils.

The **TUNNEL** range has been designed to meet the needs of every customer, thanks to the various accessories installable, combining large workloads and optimising spaces available, simplifying operator work and reducing consumption. The models of this range are equipped with a double filtration system that retains all residues, whereas the vertical wash pumps and stainless steel wash arms ensure great performance. **TUNNEL** is also equipped with counterbalanced doors with double wall and anti-fall system and rounded moulded tanks.



400V3N+T 40,59kW  
(CABLE NOT PROVIDED)



G 3/4" M  
55°C  
L=1500



Ø1"1/2 M  
L=1500

#### STANDARD EQUIPMENT

Basket for glasses dim.500x500x100mm 1

Basket for 18 dishes dim.500x500x100mm 2

#### DISHWASHERS FEATURES TUNNEL LINE TM5310

Dimensions - (mm) L - P - H 3948x770x1825h mm

Basket dimensions 500x500

n° baskets/hour 320/250/160

Passage height max (cm) 450 mm

Total power input 53,6 kW (15°C)

Standard input voltage 400V3N - 50 Hz

#### PRE-WASHING

Washing pump 1,5kW - 2,0Hp

#### FIRST WASHING

Tank capacity (lt) 70 l

Washing pump 1,5 kW - 2 hp

Tank heating element (kW) 6 kW

#### WASHING

Tank capacity (lt) 70 l

Washing pump 1,5kW - 2,0Hp

Tank heating element (kW) 6kW

#### FINAL RINSING

Break-Tank and rinse pump 0,2kW

Boiler heating element (kW) 25kW

Water consumption ~320lt/h

Inlet water temperature (°C) +15°C

Minimum water pressure (BAR) 2 bar

Water hardness (°f) 7°f - 10°f

#### DRYING

Fan 0,55kW

portata\_d\_aria\_asciugatura ~1400m3/h

Heating element 6kW

#### RECUPERATORE\_TERMICO\_CALORE

Exhauster 0,20kW

Air capacity ~ 70 m3/h

#### STANDARD EQUIPMENT



Basket for glasses dim.500x500x100mm	1
Basket for 18 dishes dim.500x500x100mm	2
4 division cutlery insert	1
Basket for glasses dim.500x500x100mm	1
Basket for 18 dishes dim.500x500x100mm	2
OPTIONAL	
Corner pre-washing system	●
Corner dryer unit	●
Option extra power 9,5 Kw	●
Internal detergent & rinse-aid dosing unit	●
Triple tank filter and stainless steel drawer	●
Neutral area 60cm	●

● = OPTIONAL INSTALLABILE, ■ = OPTIONAL NON INSTALLABILE